



This product complies with Electromagnetic Compatibility (2004/108/EC) directive when used and installed according to this instruction manual.



Correct Disposal of This Product. (Waste Electrical & Electronic Equipment). Applicable in the European Union and other European countries with separate collection systems. This marking on the product, accessories or literature indicates that the product and its electronic accessories should not be disposed of with other household waste at the end of their working life. To prevent possible harm to the environment or human health from uncontrolled waste disposal, please separate these items from other types of household waste and recycle them responsibly to promote the sustainable reuse of material resources.



**MEZE**  
AUDIO

**RAI**  
**PENTA**

PREMIUM IEM - PENTA HYBRID TECHNOLOGY

**User Manual**

## TECHNICAL SPECIFICATIONS:

<b>Driver:</b>	PENTA-HYBRID DRIVER (4 x BA and 1 x Dynamic)
<b>Frequency Range:</b>	5Hz – 44kHz
<b>Impedance:</b>	20Ω
<b>Sensitivity:</b>	112dB
<b>Max Input Power:</b>	30mW
<b>Distortion:</b>	<1%

## KEY FEATURES

Full Metal CNC Housing  
Precision Milled Metal Sound Tubes  
MMCX Connectors  
Neutral Tonality  
Anatomic Fit  
Reference Class

## PACKAGE CONTENTS:

1 x Hard eco friendly leather carrying pouch  
1 x MMCX cable ending in 3.5mm connector,  
Rhodium plated  
Includes: - 4 pairs of silicone ear-tips  
- 3 pairs of double flange  
silicone ear-tips  
- 1 pair of Comply foam tips

## RETURNS

In the event that you need warranty service on your earphones, earbuds or headphones or you are not satisfied with your purchase, please contact the Meze authorized dealer you made the purchase from or Meze Audio through the contact form on the website in case you purchased the item on the Meze Audio website. We are not responsible for items returned without previously contacting Meze Audio.

## REFUND POLICY

Products purchased from our website can be returned within 30 days of purchase date. Item must be in functional condition and not damaged by the customer. The package and item must be without any visible damage, and complete with all accessories. To be eligible for a refund from Meze Audio the product must have been purchased directly from Meze Audio. If your product was purchased from other retailers you must contact that specific retailer.

The customer is also responsible to pay for shipping to return the merchandise. If the product you received is defective from Meze Audio or when purchased through any other authorized dealer; you may request an exchange under our warranty policy.

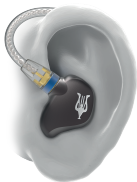
## WARRANTY

Meze Audio guarantees their products against defects in materials or workmanship for a period of two (2) years from the date of purchase from a Meze Audio authorized dealer. Meze Audio will repair or replace the product or parts at no charge. After two (2) years, you are responsible for the repair, part replacement or earphone replacement. This warranty does not cover other related costs. This warranty does not cover cosmetic damage, acts of God, normal wear and tear, accidents, misuse, commercial use, any modifications to the product, improper use or improper connection. Additionally, it doesn't cover purchase from an unauthorized dealer, attempted repair by anyone other than Meze Audio or other authorized person or unit.

This warranty does not cover products sold by unauthorized resellers, products sold as-is, open box, second hand, display models, or any other times in which the product may have been opened or used. This warranty is also void if the product was damaged by a product that it was used with such as battery leak or electrical fault of a connecting product. In order for warranty to apply a proof of purchase is required. A proof of purchase may be in the form of a receipt, bill of sale, transaction code with the model of the product and the date of purchase listed from an authorized dealer. Meze Audio is not responsible for the replacement or repair of products if in violation of this warranty. Some countries may have other restrictions on warranties.

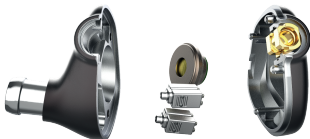
## SAFETY INSTRUCTIONS

- Keep the product, accessories and packaging parts out of reach of children and pets to prevent accidents and choking hazards.
- With wired headphones you should avoid sharp movements, which could cause the headphones to fall off your head. You could be seriously injured especially if you are wearing pierced earrings, spectacles etc.
- Do not use the product in situations which require special attention (e.g. in traffic or when performing skilled jobs).
- Always keep the product dry and do not expose it to extreme temperatures (hairdryer, heater, extended exposure to sunlight, etc.) to avoid corrosion or deformation.
- As with any equipment which will be used in close proximity to sensitive areas of the body, it is essential that the ear tips clean. Use a dry cloth for cleaning.
- Do not attempt to clean the earphone with sharp objects.
- When connecting to your music source, make sure that the volume is turned down before plugging in the headphones. Do not set the volume too high, as you could permanently damage your hearing.



## COMFORT AND FIT

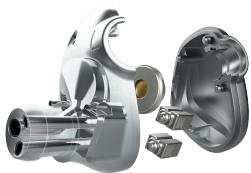
We have designed the RAI In Ear Monitors to deliver comfort and prolonged listening sessions allowing for a truly immersive experience for you and your music.



## CNC SCULPTED CHASSIS

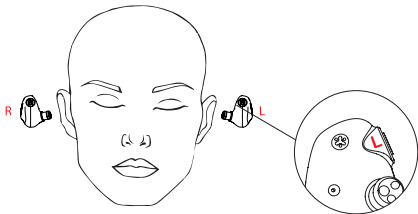
High precision CNC aluminum chassis, milled from solid aluminum

HIGH ENDURANCE ANODIZED SURFACE



## METAL SOUND TUBES

Housing is precision machined from one Solid Block of Aluminum



## LEFT AND RIGHT EAR

Left and Right is determined by the letters L or R marked behind the cable plug. The right side of the cable has a red dot at the MMCX connector.